

JIGER CORPORATION LTD.

10 McLACHLAN DR., REXDALE, ONT., CANADA - 677-4000 - CABLE JIGERS



PARTS PRICE LIST

MODEL • 197 •

* Prices subject to changes without notice.

JIGER MODEL "197"

<u>Part No.</u>	<u>Description</u>	<u>List Price in Dollars</u>	<u>Dealer Price in Dollars</u>
7-1001	Body Shell	\$220.00	\$165.00
7-1004	Sub Floor	14.50	10.88
7-1006	Front Shelf	17.50	13.10
7-1007	Back Shelf	14.50	10.88
7-1010	Seat-Back	15.00	11.25
7-1011	Seat R.H.	8.00	6.00
7-1012	Seat L.H.	6.00	4.50
7-2001	Fuel Tank Ass'y	5.95	4.46
2002	Fuel Shut off Valve	3.00	2.75
2005	Fuel Line Bracket	.40	.30
7-2011	Filler Tube	2.50	1.88
7-2012	Hose Clamp	.60	.45
7-2014	Tank Neck Hose	2.00	1.50
7-2016	Tank Mounting Bolt	1.00	.75
7-2020	Tank Cap Gasket	.80	.60
7-2022	Fuel Line Filter	1.50	1.13
7-2023	Fuel Filler Hose Clamp	.60	.45
7-2025	Fuel Line Ass'y	4.00	3.00
7-2026	Fuel & Contr. Column Cap	1.80	1.35
3001	Axle Coupler Ass'y	4.40	3.30
7-3003	Axle Block	4.40	3.30
3101	Splash Seal Felt	.60	.45
3102	Axle Seal Retainer	7.50	5.63
3201	Front Sprocket Ass'y	9.95	7.45
7-3204	Centre Sprocket Ass'y	19.95	14.95
3207	Rear Sprocket Ass'y	11.50	8.65
7-3300	Axle Completed Ass'y	22.50	16.95
3306	Axle Bearing	2.50	1.88
3307	Axle Bearing Seal	1.26	.95
3308	Axle Bearing Retainer	6.25	4.70
3309	Axle O-Ring	.40	.30
7-3310	Axle Insert	2.50	1.88
3400	Front Chain	4.40	3.30
3401	Centre Chain	4.00	3.00
3402	Rear Chain	4.00	3.00
3500	Chain Tensioner Ass'y	3.50	2.63
3503	Chain Tensioner Plate	.40	.30

Note: For correct part number refer to Jiger Manual Drawings.

JIGER MODEL "197"

2

<u>Part No.</u>	<u>Description</u>	<u>List Price in Dollars</u>	<u>Dealer Price in Dollars</u>
3600	Tire Mounting Bolt	.35	.26
3601	Retainer Washer	.80	.60
3603	Sprocket Shear Pin	.15	.11
3604	Sprocket Shear Pin Retainer	.40	.30
3605	Coupler Pin	.40	.30
7-3609	Motor Mount Spacer	1.20	.90
4001	Tire Ass'y L.H.	28.50	21.38
4002	Tire Ass'y R.H.	28.50	21.38
4112	Tire Valve	.80	.60
7-5000	Power Pack Ass'y	460.00	345.00
7-5002	Engine Model 197	230.00	172.50
7-5009	Engine Mounting Frame	52.00	39.00
5003	Stationary Quadrant	10.00	7.50
7-5010	Bushing Starter Cable	.60	.45
7-5011	Starter-Motor Cable	2.50	1.88
7-5012	Starter Cable Stop Sleeve	.55	.41
7-5100	Clutch Shaft Ass'y	19.50	14.62
7-5105	Crank Shaft Clutch Nut	1.95	1.46
7-5109	Clutch Hub Bearing	3.50	2.63
5202	Steering Clutch Pulley Ass'y	7.50	5.63
7-5212	Clutch Spring	.40	.30
5214	Throw Out Cap Ass'y	5.75	4.31
5215	Clutch Block	5.00	3.75
5216	Inner Clutch Disc	1.50	1.13
5217	Outer Clutch Disc	1.50	1.13
5218	Steering Clutch Lining	1.50	1.13
5220	Clutch Block Spring	.50	.38
5304	Throw Out Shaft	3.00	2.25
7-5307	Pressure Plate Ass'y	1.60	1.20
7-5308	Throw Out Pin	.70	.53
7-5314	Clutch Lever Ass'y	4.50	3.38
7-5400	Clutch Rotor Ass'y	13.95	10.46
7-5402	Rotor Hub Ass'y	8.50	6.38
5408	Garter Spring	1.25	.94
5413	Clutch Shaft Key	.75	.56
7-5422	Rotor Segment Ass'y	3.50	2.63
5426	Clutch Bearing Housing Ass'y	7.50	5.63
5429	Clutch Shaft Bushing	1.45	1.10
5209	Clutch Bearing	3.20	2.40
7-5210	Clutch Shaft Spacer Shim	.20	.15

<u>Part No.</u>	<u>Description</u>	<u>List Price in Dollars</u>	<u>Dealer Price in Dollars</u>
5501	Carburetor Gasket	.40	.30
7-5502	Carburetor 248-A	34.83	26.12
5504	Governor Arm	.75	.56
7-5510	Air Cleaner Housing	3.75	2.81
7-5511	Air Filter Element	.95	.71
7-5514	Carburetor Bushing	.20	.15
7-5516	Air Filter Element Retainer	.40	.30
7-5518	Carburetor Elbow	5.90	4.43
7-5519	Throttle Return Spring Arm	.16	.12
7-5520	Carburetor Idler Screw	.60	.45
7-5600	Steering Clutch Ass'y	90.00	67.50
7-5506	Air Cleaner Ass'y	3.95	2.96
7-6000	Control Column Ass'y	128.00	96.00
7-6001	Control Column Upper Ass'y	13.50	10.13
6006	Throttle Handle Tube Ass'y	2.75	2.06
6009	Throttle Grip	.60	.45
6010	Throttle Cable Lock Plate	.80	.60
7-6011	Throttle Cable Outer	.75	.56
7-6012	Brake Lever Ass'y	5.20	3.90
6016	Clutch Lever Bushing	.40	.30
6019	Switch Wire	.40	.30
6020	Cable Sleeve	.40	.30
7-6021	Mount Light Switch	.50	.38
6023	Throttle Cable Inner	.70	.53
7-6026	Throttle Cable Stop Ass'y	2.00	1.50
7-6030	Mount Brake Pull Rod	1.20	.90
6100	Control Column Lower	25.00	18.75
6105	Brake Actuator	2.40	1.80
7-6106	Primary Clutch Tube	3.00	2.25
7-6107	Clutch Lever Upper	2.00	1.50
6109	Torsion Bar Ass'y	6.50	4.88
7-6115	Adj. Lock Nut	1.40	1.05
7-6116	Primary Clutch Tube Ass'y	5.30	4.13
6115	Adj. Lock Nut - Clutch.	1.00	.75
6117	Spiral Wrap 1½"	.20	.15
6118	Spiral Wrap 8½"	.40	.30
6206	Brake Lining	2.40	1.80
6205	Brake Rivets	.08	.06
7-6207	Throttle Return Spring	.90	.68
6208	Brake Disc	6.00	4.50
6209	Brake Return Spring	1.00	.75
7-6210	Brake Pull Rod	1.20	.90
6211	Brake Rod Spring	.40	.30

JIGER MODEL "197"

<u>Part No.</u>	<u>Description</u>	<u>List Price in Dollars</u>	<u>Dealer Price in Dollars</u>
6212	Primary Belt	3.20	2.40
7-6300	Adjustable Prim. Pulley Ass'y	24.00	18.00
7-6301	Prim. Pulley Shaft Weld Ass'y	10.00	7.50
7-6303	Adj. Pulley Hub & Flange Ass'y	4.00	3.00
7-6306	Circlip	.40	.30
7-6217	Primary Needle Bearing	4.20	3.15
7-6307	Spring Spacer	.70	.53
7-6309	Pulley Key	1.26	.95
7-6310	Socket Set Screw	.40	.30
7-6311	Key Retainer	2.50	1.88
7-6308	Bearing Spacer	.70	.53
7-6308-A	Bearing Sleeve	1.50	1.13
7-6314	Bearing Needle- Roller	.05	.04
7-7001	Vari Speed Pulley Ass'y R.H.	30.50	22.88
7-7002	Vari Speed Pulley Ass'y L.H.	29.50	22.12
7-7003	Vari Speed Sheave Outer R.H.	18.50	13.88
7-7004	Vari Speed Sheave Outer L.H.	18.00	13.50
7006	Vari Speed Bearing	3.50	2.63
7100	Vari Speed Sheave Inner	8.50	6.38
7200	Vari Speed Spring	4.00	3.00
7201	Spring Pin	.40	.30
7202	Bearing Clip	2.00	1.50
7203	Grease Retainer Element	.40	.30
7204	Vari Speed Belt	6.80	5.10
7205	12 Tooth Bearing Housing	2.50	1.88
7-6313	Screw-Key Retainer	.20	.15
7206	12 Tooth Bearing Housing Ass'y	6.00	4.50
7-8001	Muffler Ass'y	16.00	12.00
7-8012	Flexible Exhaust Pipe	2.80	2.10
7-8013	Clamp Muffler Pipe	1.00	.75
7-8014	Muffler Fastener	.20	.15
7-8016	Muffler Flange & Elbow Ass'y	3.50	2.63
8100	High Speed Assist Ass'y	9.20	6.90
8101	High Speed Assist Spring	5.00	3.75
8102	Assist Tube Ass'y	4.00	3.00
8105	High Speed Assist Spring Pin	.20	.15
7-8208	High Speed Lock Ass'y	1.88	1.50
7-8210	Bracket Ass'y	31.50	23.50
7-8213	Spacer Support Arm	.80	.60

JIGER MODEL "197"

<u>Part No.</u>	<u>Description</u>	<u>List Price in Dollars</u>	<u>Dealer Price in Dollars</u>
9001	Serial Number Plate	2.00	1.50
9002	Jiger Name Plate	2.40	1.80
7-9003	Seat Cushion - Back	6.00	4.50
7-9003-1	Seat Cushion - Bottom L.S.	5.00	3.75
7-9003-2	Seat Cushion - Bottom R.S.	5.00	3.75
9012	Light Cable	3.60	2.70
9013	Light Switch	2.00	1.50
9014	Light-Sealed Beam	2.80	2.10
9021	Light Cable Connector	.40	.30
9016	Light Hook	.30	.23
9017	Light Rubber Band	.20	.15
7-9025	Cross Brace	2.20	1.65
7-9026	Seat Support Bar	6.40	4.80
7-9027	Cross Brace Bumper	.60	.45
9103	Tool Kit Pouch	1.60	1.20
9104	Screw Driver	1.20	.90
9105	Pliers	1.20	.90
9106	Spanner Wrench	1.00	.75
9107	Spark Plug Wrench	1.20	.90
9109	Chain Breaker	2.40	1.80
9112	Chain Connecting Link	.30	.23
9114	Spanner Wrench	1.00	.75
9115	Spanner Wrench	1.00	.75
9123	Unitool	2.80	2.10
9130	Grease Gun	4.00	3.00
7-9132	Adjustable Lock Nut Wrench	2.10	1.58
7-9133	Adjustable Lock Nut Wrench Handle	.50	.38
7-9201	Snow Track Link	1.00	.75
9200	Snow Track	150.00	120.00
7-9202	3/32 Allan Wrench	.50	.38
7-9203	5/16 Allan Wrench	.60	.45
9113	Chain Half Link	.30	.23
9131	Grease Tube	2.65	2.00
9140	Tire Repair Kit	.80	.60
9150	Jiger Yellow Spray Bomb	3.00	2.25
9151	Fibre Glas Repair Kit	3.00	2.25
9152	1 Pint of Resin	2.50	1.88
9153	DDM Resin Hardner	1.00	.75
9154	Fibre Glas-Matt 1½ oz.	.50	.38
9155	1 Pint Jiger Gelcoat	3.80	2.85
9126	Air Pump	3.00	2.25
9100	Tool Kit Ass'y	20.00	15.00
9302	Vari-Drive Spring Puller	3.60	2.40
9310	Toneau Cover	19.95	14.95
	Trailer Hitch	3.00	2.55

JIGER MODEL "197"

PART NO.	PART NAME	QTY PER JIGER	LIST PRICE	DEALER PRICE
7-9500	<u>BOLT</u> 1/4 - 20 x 5/8 H.H.C.S. PLATED MUFFLER HANGER	2	.10	.08
7-9501	<u>BOLT</u> 1/4 - 28 x 5/8 H.H.C.S. PLAIN BRAKE ACTUATOR TO CONTR. COLUMN	1	.10	.08
7-9502	<u>BOLT</u> 1/4 - 28 x 7/8 H.H.C.S. PLATED CARBURETOR TO MANIFOLD SEAT BACK TO BODY	2 6	.10	.08
7-9503	<u>BOLT</u> 1/4 - 28 x 3/4 H.H.C.S. PLATED STATIONARY QUADRANT ADJUSTMENT VARISPEED BRACKET TO BODY FRONT SHELF TO BODY SEAT SUPPORT BAR TO BODY CROSS BRACE TO BODY	1 6 5 2 5	.10	.08
7-9504	<u>BOLT</u> 1/4 - 28 x 1 H.H.C.S. PLATED SUB FLOOR MOUNTING BOLT CLUTCH ASSY TO FRAME CHAIN TENSIONER TO BODY	2 2 12	.10	.08
7-9505	<u>BOLT</u> 1/4 - 28 x 1-1/4 H.H.C.S. PLATED CLUTCH LEVER TO THROW OUT CAP	1	.12	.09
7-9506	<u>BOLT</u> 1/4 - 28 x 1-1/2 H.H.C.S. PLATED COLUMN SUPPORT TO FRAME BEARING CLIP TO V.D. BRACKET	2 4	.12	.09
7-9507	<u>BOLT</u> 1/4 - 28 x 1-3/4 H.H.C.S. PLATED ENGINE FRAME TO V.D. BRACKET	4	.15	.11
7-9508	<u>BOLT</u> 5/16 - 24 x 3/4 H.H.C.S. PLATED AXLE BLOCK FRONT & REAR TO BODY	4	.12	.09
7-9509	<u>BOLT</u> 5/16 - 24 x 2-3/4 H.H.C.S. PLATED AXLE BLOCK CENTRE TO BODY	2	.20	.15
7-9510	<u>BOLT</u> 10 x 30 mm H.H.C.S. PLATED ENGINE TO MOUNTING FRAME	4	.25	.18
7-9520	<u>TERMINAL</u> 9/64 HOLE RING LIGHT CABLE GROUND	1	.10	.08
7-9521	<u>TERMINAL</u> 3/16 HOLE FORK SIZE AWG 16-14 LIGHT CABLE TO SEALED BEAM MOTOR CABLE TO SWITCH CABLE TO MOTOR	2 1 1	.10	.08

JIGER MODEL "197"

PART NO.	PART NAME	QTY PER JIGER	LIST PRICE	DEALER PRICE
7-9530	NUT 6 - 32 ESNA NUT PLATED BRAKE ROD ADJUSTMENT	2	.08	.06
7-9531	NUT 10-32 ESNA NUT PLATED FUEL LINE CLAMP TO BODY CLUTCH TUBE TO UPPR. CLUTCH LEVER	2 1	.08	.06
7-9532	NUT 1/4 - 28 ESNA NUT PLATED CLUTCH LEVER - THROW OUT CAP AXLE BEARING RETAINER - BODY TORSION BAR - CONTROL COLUMN CLUTCH ASSY - FRAME COLUMN SUPPORT - FRAME BEARING CLIP TO V.D. BRACKET ENGINE FRAME - V.D. BRACKET SUB FLOOR MOUNTING	1 24 2 2 2 4 4 2	.10	.08
7-9533	NUT 1/4 - 28 ESNA - THIN PLATED CARBURETOR - AIR CLEANER	2	.10	.08
7-9534	NUT 1/4 - 28 STD. HEX NUT PLATED SUB FLOOR MOUNT V.D. BRACKET TO BODY FRONT SHELF TO BODY SEAT SUPPORT BAR TO BODY SEAT - BACK - BODY	2 6 5 2 6	.10	.08
7-9535	NUT 3/8 - 24 HEX JAM NUT PLATED THROW OUT SHAFT LOCK NUT	2	.15	.12
7-9536	NUT 5/16 - 24 ESNA REG. PLATED AXLE BLOCK FRT. & REAR AXLE BLOCK CENTRE	4 2	.15	.12
7-9537	NUT 10 - 32 ESNA NUT THIN PLATED HAND BRAKE LEVER - MOUNT	1	.08	.06
7-9538	NUT 5/8 - 18 STD. HEX NUT PLATED CLUTCH SHAFT NUT	1	.20	.15
7-9539	NUT 1/4 DOM. FASTENER DC 521-1420 MUFFLER	2	.08	.06

JIGER MODEL "197"

PART NO.	PART NAME	QTY PER JIGER	LIST PRICE	DEALER PRICE
7-9550	WASHER 1/4 ALUMINUM WASHERS		.10	.08
	CHAIN TENSIONER TO BODY	12		
	MUFFLER BRACKET	2		
	SEAT SUPPORT BAR TO BODY	2		
	CROSS BRACE	9		
	SUB FLOOR MOUNTING BOLT	6		
	AXLE BEARING RETAINER	24		
	V.D. BRACKET TO OUTER BODY	6		
	SEAT TO BODY OUT & INSIDE	12		
	FRONT SHELF TO BODY	10		
	BEARING CLIP TO V.D. BRACKET	4		
	ENGINE FRAME TO V.D. BRACKET	4		
7-9551	WASHER 1/4 BOLT FLAT STEEL WASHER		.08	.06
	COLUMN SUPPORT TO FRAME	1		
	TORSION BAR TO CONTR. COLUMN	1		
7-9552	WASHER 1/4 BOLT EXTERNAL TOOTH LOCK		.05	.03
	V.D. BRACKET TO BODY	6		
	CHAIN TENSIONER TO BODY	12		
	SEAT TO BODY	6		
7-9553	WASHER 5/16 BOLT ALUMINUM WASHER		.12	.09
	AXLE BLOCK FRONT & REAR	6		
7-9554	WASHER 5/16 BOLT EXTERNAL TOOTH LOCK		.08	.06
	AXLE BLOCKS TO BODY	6		
7-9555	WASHER 7/16 BOLT SPLIT STEEL LOCK		.12	.09
	ENGINE TO FRAME	4		
7-9556	WASHER 5/16 BOLT SPRING LOCK		.10	.08
	TIRES TO AXLE & TOOL KIT	8		
7-9570	SCREW 10 - 32 x 3/8 A.H.M.S. PLAIN		.10	.08
	KEY RETAINER	4		
7-9571	SCREW 10 - 32 x 5/8 R.H.M.S. PLATED		.08	.06
	FUEL LINE BRACKET TO BODY	2		
	HAND BRAKE LEVER TO MOUNT	1		
7-9572	SCREW 10 - 32 x 5/8 SET SCREW PLAIN		.15	.11
	KEY ADJUSTER	2		

JIGER MODEL "197"

PART NO.	PART NAME	QTY PER JIGER	LIST PRICE	DEALER PRICE
7-9573	<u>SCREW</u> 10 - 32 x 3/4 R.H.M.S. PLATED CLUTCH TUBE TO UPFR. LEVER	1	.08	.06
7-9574	<u>SCREW</u> 10 - 32 1-1/4 R.H.M.S. PLATED CARBURETOR - AIR CLEANER	2	.10	.08
7-9590	<u>RIVET</u> 1/4 x 1/8 R.H. ALUMINUM NAME PLATE - BODY STEERING CLUTCH HOUSING	4 12	.06	.04
7-9591	<u>RIVET</u> 3/32 - 5/16 R.H. ALUMINUM CONTR. COLUMN & GAS TANK CAP	4	.06	.04
7-9592	<u>RIVET</u> 1/8 - 3/8 R.H. STEEL #6004 THROTTLE GRIP STOP PIN	1	.06	.04
7-9593	<u>RIVET</u> # 3 - 3 BRASS TUBULAR BRAKE RIVETS (LINING)	12	.08	.06
7-9594	<u>RIVET</u> # 4 - 4 BRASS TUBULAR CLUTCH ROTOR	9	.08	.06

ENGINE JLO L 197

Qty. Jiger	Item Number	Part Number	Description	List Price	Dealer Price
1	7 - 1	197-01-007-11	Crank Case, Magneto Side	27.00	20.25
1	2	197-01-002-10	Crank Case P.T.O. Side	17.55	13.16
2	3	000-41-27-090	Stud, M 8 x 25	.20	.15
2	4	000-41-27-096	Stud, M 8 x 50	.25	.19
1	5	197-01-006-00	Gasket for Crank Case	.20	.15
4	6	000-41-010-77	Screw, M 6 x 50	.15	.11
2	7	000-41-010-73	Screw, M 6 x 30	.10	.08
6	8	000-40-64-506	Lock Washer, B 6	.05	.04
1	9	000-41-010-86	Screw, M 8 x 8	.10	.08
1	10	000-34-001-40	Gasket Ring	.05	.04
2	11	DIN-6504	Oil Seal 25x40x8	1.45	1.09
1	12	002-44-445-90	Grommet	.10	.08
1	13	197-86-901-00	Crank Shaft Assy.	70.20	52.65
2	14	000-41-95-105	Nut M 16 x 1.5	.35	.26
2	15	000-40-645-10	Lock Washer R 16	.10	.08
1	16	002-44-742-90	Needle Bearing	4.25	3.19
2	17	C 3-DIN-625	Ball Bearing 6305	6.85	5.15
1	18	000-40-890-20	Woodruff Key 3x5x15, Mag. Side	.25	.19
1	19	000-40-840-63	Woodruff Key 6x5.5 P.T.O. Side	.25	.19
1	20	197-05-900-00	Piston Std. 66.0 MM	23.40	17.55
2	21	RWN-42121	Piston Ring Std. 66.0x2.5	1.55	1.16
1	22	197-05-002-00	Wrist Pin	2.95	2.22
2	23	A18-DIN-73123	Circlip	.15	.11
1	24	197-98-950-00	Piston, Oversize, 66.5 MM	23.40	17.55
2	25	RWN42121	Piston Ring, Oversize 66.5x2.5	1.55	1.16
1	26	197-07-803-10	Alu. Cylinder/Cylinder Head	56.70	42.53
2	27	000-41-270-89	Stud for Exhaust, M 8x22	.20	.15
1	28	197-07-002-00	Cylinder Gasket	.20	.15
6	29	000-41-97-010	Nut M 8	.05	.04
6	30	000-40-645-07	Lock Washer B 8	.05	.04
1	31	197-07-022-00	Exhaust Gasket	.30	.23
1	32	197-07-024-00	Insulation Flange	2.80	2.10
1	33	197-07-020-00	Flange Gasket	.30	.23
2	34	000-41-50-079	Screw AM 6x30	.10	.08
4	35	000-40-67-527	External Tooth Washer A 6.4	.05	.04
2	36	DIN-933-8G	Stud M 6x22	.20	.15
2	37	000-41-97-008	Nut M 6	.05	.04
2	38	152-07-749-10	Manifold Gasket	.15	.11
	39	197-11-802-10	Magneto/Ignition compl.	66.15	49.61
1	40	000-43-05-125	Magneto Wheel	24.55	18.41
1	41	000-43-05-323	Armature Plate	39.80	29.85
2	42	000-41-500-44	Screw 4 x 15 for points	.05	.04
2	43	000-40-64-504	Lock Washer 3.4	.05	.04
2	44	000-40-51-005	Washer 4.3	.05	.04
1	45	002-44-401-90	Grommet for H.T. Wire	.10	.08
1	46	002-44-445-90	Grommet for Light Cable	.10	.08
1	47	102-11-319-00	Connector for Stop Wire	1.85	1.39
1	48	002-44-459	Cable Sleeve	.05	.04

ENGINE JLO L 197

Qty. Jiger	Item Number	Part Number	Description	List Price	Dealer Price
1	49	102-11-439-00	Protection Cap	.40	.30
1	50	152-11-001-00	Spark Plug Cap	.45	.34
1	51	152-11-002-00	Spring	.15	.11
1	52	002-44-277-90	Spark Plug Nut	.30	.23
1	53	008-00-020-90	Spark Plug UK10	1.10	.83
1	54	000-43-05-558	Ignition Coil	17.35	13.01
1	55	000-43-08-401	Lighting Coil	5.75	4.31
1	56	000-43-05-225	Ignition Points Set	3.00	2.25
1	57	000-43-06-520	Condensor	1.60	1.20
1	58	000-43-06-312	Lubrication Wick	.05	.04
1	59	102-11-319-00	Stop Button	2.05	1.54
1	60	102-11-329-00	Protection Cap	.15	.11
1	61	197-14-005-10	Fan Cowl	15.95	11.96
6	62	000-41-010-70	Bolt M 6x22	.10	.08
6	63	000-41-64-506	Lock Washer B 6	.05	.04
1	64	197-14-001-11	Impeller Wheel	24.30	18.25
3	65	000-41-090-73	Screw M 6x22SZ	.10	.04
3	66	000-40-675-27	External Toothwasher A 6.4	.05	.04
	67	197-41-806-10	Recoil Starter Compl.	26.10	19.58
1	68	197-41-007-11	Housing	6.55	4.92
1	69	197-41-008-11	Cable Drum	4.70	3.53
1	70	197-41-022-01	Recoil Spring	3.80	2.85
1	71	7-5011	Starter Cable	2.10	1.58
2	72	197-41-013-00	Washer	.10	.08
2	73	197-41-014-00	Intermediate Washer	.05	.04
1	74	197-41-805-00	Carrier	5.65	4.24
1	75	197-41-019-00	Pressure Spring	.10	.08
1	76	197-41-012-00	Cover Plate	.30	.23
1	77	000-40-67-008	C-Clip	.10	.08
1	78	002-42-075-90	Plug	.40	.30
1	79	7-5010	Cable Guide Bushing	.80	.60
1	80	197-41-025-01	Starter Handle	1.50	1.13
1	81	197-41-009-10	Pulley	3.80	2.86
3	82	000-41-97-008	Nut M 6	.05	.04
6	83	000-40-64-505	Lock Washer B 6	.05	.04
3	84	000-41-01-076	Bolt M 6x45	.10	.08
1	85	102-41-72-900	Gasket	.15	.11
1	86	197-61-801-00	Gasket Set with Oil Seals	5.20	3.90
1	87	7-5012	Starter Cable Stop Sleeve	.55	.41

MODEL "197"
CARBURETOR PARTS

Ref. No.	HL-248A Part No.	Part Name	List Price	Dealer Price
	HL-248A	Carburetor, Complete	32.40	24.30
1	014564	Body (Service)	14.58	10.93
2	02531	*Body Channel Welch Plug	.16	.12
3	04784	Choke Friction Ball	.16	.12
4	08805	Choke Friction Spring	.16	.12
5	014620	Choke Shaft & Lever	2.27	1.70
6	013547	Choke Shutter	.24	.18
7	08942	Choke Shutter Screw & Lockwasher	.16	.12
8	012473	Diaphragm Gasket	.24	.18
9	012475	*Diaphragm	2.19	1.64
10	013549	Diaphragm Cover	2.27	1.70
11	012354	Flange Gasket	.16	.12
	013404	Flange Insulator Sleeve (2)	.16	.12
	013405	Flange Insulator Washer (2)	.16	.12
12	012930	Fuel Pump Gasket	.24	.18
13	014230	*Fuel Pump Diaphragm (Pulse)	.73	.55
14	014229	*Fuel Pump Diaphragm (Valve)	.97	.73
15	013335	Fuel Pump Body	1.94	1.46
16	010098	Fuel Pump Body Screw & Lockwasher	.16	.12
17	010530	*Fuel Strainer Screen	.32	.24
18	010529	Fuel Strainer Cover Gasket	.16	.12
19	010527	Fuel Strainer Cover	.73	.55
20	010571	*Fuel Strainer Cover Ret. Screw	.24	.18
21	011498	*Idle Mixture Screw	.73	.55
22	08793	*Idle Mixture Screw Spring	.16	.12
23	011428	Idle Mixture Screw Washer	.16	.12
24	011401	Idle Mixture Screw Packing	.16	.12
25	05095	*Idle Speed Screw	.16	.12
26	0788	*Idle Speed Screw Spring	.16	.12
27	010513	*Inlet Control Lever	.41	.31
28	013406	*Inlet Control Lever Fulcrum Pin	.16	.12
29	013269	*Inlet Control Lever Fulcrum Pin Ret. Screw	.16	.12
30	013546	*Inlet Needle, Seat & Gasket	2.11	1.58
31	010165	Inlet Seat Gasket	.16	.12
32	011503	*Inlet Tension Spring	.24	.18
33	014311	*High Speed Mixture Screw	1.46	1.10
34	08793	*High Speed Mixture Screw Spring	.16	.12
35	011428	High Speed Mixture Screw Washer	.16	.12
36	011401	High Speed Mixture Screw Packing	.16	.12
37	012084	Nozzle Check Valve	1.38	1.04
38	013996	Throttle Shaft & Lever	2.19	1.64
39	013219	Throttle Shaft Clip	.16	.12
40	010280	Throttle Shaft Clip Ret. Screw	.16	.12
41	013793	*Throttle Shaft Return Spring	.24	.18
42	013534	Throttle Shutter	.24	.18
43	08942	*Throttle Shutter Screw & Lockwasher	.16	.12
44	GS-153	*Gasket & Packing Set	.97	.73
45	RK-795	Repair Parts Kit	9.53	7.15

JIGER CORPORATION LTD.

10 McLACHLAN DR., REXDALE, ONT., CANADA - 677-4000 - CABLE JIGERS



PARTS PRICE LIST

MODEL • 152 •

* Prices subject to changes without notice.

JIGER MODEL "152"

<u>Part No.</u>	<u>Description</u>	<u>List Price in Dollars</u>	<u>Dealer Price in Dollars</u>
1001	Body Shell	220.00	165.00
1004	Sub Floor	14.50	10.88
1005	Seat	30.00	22.50
1006	Front Shelf	17.50	13.10
1007	Back Shelf	12.50	9.38
1007-A	Back Shelf (Aqua Back)	12.50	9.38
1008	Seat & Bottle Ass'y	33.75	25.30
2001	Fuel Tank Ass'y	8.25	6.60
2002	Fuel Shut Off Valve	3.00	2.25
2003	Fuel Line	2.80	2.10
2005	Fuel Line Bracket	.40	.30
2006	Filler Neck Ass'y	3.25	2.45
2008	Breather Pipe Extension	.85	.63
2009	Filler Cap	1.00	.75
2011	Filler Hose	2.07	1.52
2012	Hose Clamp	1.00	.75
2016	Tank Strap Bolt	.80	.60
2017	Tank Strap	1.50	1.13
2018	Tank Strap Pin	.80	.60
2019	Tank Strap Ass'y	3.00	2.25
3001	Axle Coupler	4.40	3.30
3003	Axle Block	4.40	3.30
3101	Splash Seal Felt	.60	.45
3102	Axle Seal Retainer	7.50	5.63
3201	Front Sprocket	9.95	7.45
3204	Centre Sprocket	17.50	13.13
3207	Rear Sprocket	11.50	8.65
3300	Axle Completed Ass'y	22.50	16.95
3306	Axle Bearing	2.50	1.88
3307	Axle Bearing Seal	1.26	.95
3308	Axle Bearing Retainer	6.25	4.70
3309	Axle O Ring	.40	.30
3310	Axle Reinforcing Insert	2.50	1.88
3400	Front Chain	4.40	3.30
3401	Centre Chain	4.00	3.00
3402	Rear Chain	4.00	3.00
3500	Chain Tensioner	3.50	2.63
3503	Chain Tensioner Plate	.40	.30

<u>Part No.</u>	<u>Description</u>	<u>List Price in Dollars</u>	<u>Dealer Price in Dollars</u>
3600	Tire Mounting Bolt	.35	.26
3601	Retainer Washer	.80	.60
3603	Sprocket Shear Pin	.15	.11
3604	Sprocket Shear Pin Retainer	.40	.30
3605	Coupler Pin	.40	.30
3607	Motor Mount Plate	1.00	.75
3609	Motor Mount Spacer	.80	.60
3613	Motor Mount Block Ass'y	3.25	2.45
3614	Motor Mount Bracket	3.75	2.80
4001	Tire Ass'y L. H.	28.50	21.38
4002	Tire Ass'y R.H.	28.50	21.38
4106	Valve Spring	.40	.30
4107	Valve Ball	.40	.30
4108	Valve Washer	.40	.30
4109	Valve Core	.26	.20
4110	Valve Cap	.10	.08
4111	Valve Stem	.50	.38
4112	Tubeless Valve	.85	.64
5000	Power Pack Ass'y	450.00	337.00
5002	Engine Model 152	175.00	122.00
5003	Stationary Quadrant	10.00	7.50
5007	Engine Mounting Frame	48.00	36.00
5100	Clutch Shaft Ass'y	18.50	13.88
5105	Crank Shaft Nut	1.50	1.13
	Spark Plug	1.10	.83
5201	Steering Clutch Housing	7.50	5.63
5208	Steering Clutch Spring	4.00	3.00
5209	Clutch Bearing	3.20	2.40
5214	Throw Out Cap Ass'y	5.75	4.31
5215	Clutch Block	5.00	3.75
5216	Inner Clutch Disc	1.50	1.13
5217	Outer Clutch Disc	1.50	1.13
5218	Steering Clutch Lining	1.50	1.13
5220	Clutch Block Spring	.50	.38
5304	Throw Out Shaft	3.00	2.25
5308	Throw Out Pin	.70	.53
5309	Pressure Plate	1.50	1.13
5314	Clutch Lever Ass'y	3.50	2.63
5400	Clutch Rotor Ass'y	12.00	9.00
5402	Rotor Hub Ass'y	7.00	5.25
5408	Garter Spring	.95	.73
5413	Clutch Shaft Key	.75	.56
5418	Tab Washer	.20	.15
5416	Throttle Cable Stop Ass'y	1.96	1.50

<u>Part. No.</u>	<u>Description</u>	<u>List Price in Dollars</u>	<u>Dealer Price in Dollars</u>
5422	Rotor Segment Ass'y	3.25	2.40
5425	Clutch Shaft Spacer	1.50	1.13
5426	Clutch Bearing Housing Ass'y	7.50	5.63
5429	Clutch Shaft Bushing	1.45	1.10
5501	Carburetor Gasket	.40	.30
5502	Carburetor H. L. 186 B	34.83	26.12
5503	Throttle Lever Bracket	2.00	1.50
5504	Governor Arm	.75	.56
5505	Air Cleaner Support Plate	.40	.30
5506	Air Cleaner Ass'y	6.10	4.58
5507	Air Cleaner Holder	1.50	1.13
5510	Air Cleaner Base	2.00	1.50
5511	Air Cleaner Element	.80	.60
5514	Carburetor Bushings	.20	.15
5600	Steering Clutch Ass'y	90.00	67.50
5500	Carburetor H. L. 238 A	34.83	26.12
6000	Control Column Ass'y	118.00	88.50
6001	Control Column Upper	12.00	9.00
6005	Control Column Cap	1.60	1.20
6006	Throttle Handle Tube	2.75	2.06
6009	Throttle Grip	.60	.45
6010	Throttle Cable Lock Plate	.80	.60
6011	Throttle Cable Outer	.75	.56
6012	Brake Lever	2.50	1.82
6016	Clutch Lever Bushing	.40	.30
6019	Switch Wire	.40	.30
6020	Cable Sleeve	.40	.30
6023	Throttle Cable - Inner	.70	.53
6100	Control Column Lower	25.00	18.75
6105	Brake Actuator	2.40	1.80
6106	Primary Clutch Tube	3.00	2.25
6107	Clutch Lever Upper	2.00	1.50
6109	Torsion Bar Ass'y	6.50	4.88
6115	Adjusting Lock Nut	1.00	.75
6116	Primary Clutch Tube Ass'y	5.30	4.13
6117	Spiral Wrap	.20	.15
6118	Spiral Wrap	.40	.30
6203-1	Primary Pulley Ass'y H.S.p.	23.00	17.25
6200	Primary Pulley Ass'y	18.00	13.50
6206	Brake Lining	2.40	1.80
6207	Throttle Return Spring	.90	.68
6208	Brake Disc	6.00	4.50
6209	Brake Return Spring	1.00	.75

<u>Part No.</u>	<u>Description</u>	<u>List Price in Dollars</u>	<u>Dealer Price in Dollars</u>
6210	Brake Pull Rod	1.20	.90
6211	Brake Rod Spring	.40	.30
6212	Primary Belt	3.20	2.40
7001	Vari-Drive Ass'y L. H.	30.50	22.88
7002	Vari-Drive Ass'y R. H.	29.50	22.12
7003	V/D Sheave Outer L. H.	18.50	13.88
7004	V/D Sheave Outer R. H.	18.00	13.50
7006	V/D Bearing	3.50	2.63
7100	V/D Sheave Inner	8.50	6.38
7200	Vari-Drive Spring	4.00	3.00
7201	Vari-Drive Spring Pin	.40	.30
7202	Vari-Drive Bearing Clip	2.00	1.50
7203	Vari-Drive Grease Retainer	.40	.30
7204	Vari-Drive Belt	6.80	5.10
7205	12 Tooth Bearing Housing	2.50	1.88
7206	12 Tooth Bearing Housing Ass'y	6.00	4.50
8001	Muffler	20.00	15.00
8100	High Speed Assist Spring Ass'y	9.20	6.90
8101	High Speed Assist Spring	5.00	3.75
8102	Assist Tube Ass'y	4.00	3.00
8105	Assist Spring Pin	.20	.15
8200	Bracket Assembly	31.50	23.50
8208	High Speed Assist Lock	1.88	1.50
9001	Serial Plate	2.00	1.50
9002	Name Plate	2.40	1.80
9003	Seat Cushion	16.00	12.00
9009	Heat Baffle - Seat	1.50	1.13
9010	Seat Cushion Stud	.30	.23
9012	Light Cable Button	3.60	2.70
9013	Light Switch	2.00	1.58
9014	Sealed Beam Lamp	2.80	2.10
9021	Light Cable Connector	.40	.30
9016	Light Hook	.30	.23
9017	Light Rubber Band	.20	.15
9029	Tail Pipe Plate	1.75	1.31
9100	Tool Kit	20.00	15.00
9103	Tool Kit Pouch	1.60	1.20
9104	Screw Driver	1.20	.90
9105	Pliers	1.20	.90
9106	Spanner Wrench	1.00	.75
9107	Spark Plug Wrench	1.20	.90

<u>Part.No.</u>	<u>Description</u>	<u>List Price in Dollars</u>	<u>Dealer Price in Dollars</u>
9109	Chain Breaker	2.40	1.80
9112	Chain Connecting Link	.30	.23
9114	Spanner Wrench 9 - 10 mm	1.00	.75
9115	Spanner Wrench 14 - 17 mm	1.00	.75
9123	Unitool - Wheel Wrench	2.80	2.10
9126	Tire Pump	3.00	2.25
9130	Grease Gun	4.00	3.00
9113	Chain Half Link	.30	.23
9131	Grease Tube	2.65	2.00
9140	Wire Repair Kit	.80	.60
9150	Yellow Spray Bomb	3.00	2.25
9151	Fibre Glas Repair Kit	3.00	2.25
9152	1 Pint of Resin	2.50	1.88
9153	DDM Resin Hardner	1.00	.75
9154	Fibre Glas Matt 1½ oz.	.50	.38
9155	Gelcoat 1 Pint Can	3.80	2.85
9302	Vari-Drive Spring Puller	3.60	2.40
9200	Snow Tracks	150.00	120.00
9210	Toneau Cover	19.95	14.95
	Trailer Hitch	3.00	2.55

JIGER MODEL "152"

PART NO	PART NAME	QTY PER JIGER	LIST PRICE	DEALER PRICE
9501	<u>BOLT</u> 1/4 x 28 x 5/8 H.H.C.S. V.D. BRACKET TO BODY	6	.10	.08
	BEARING CLIP TO V.D. BRACKET	4		
	TRAILER HITCH TO BODY	2		
	MUFFLER DEFLECTOR TO BODY	2		
9502	<u>BOLT</u> 1/4 x 28 x 3/4 H.H.C.S. FRONT COUPLER TO FLOOR	2	.10	.08
	REAR COUPLER TO FLOOR	2		
	CHAIN TENSIONER TO BODY	12		
	SEAT TO BODY	8		
9503	<u>BOLT</u> 1/4 x 28 x 1 3/8 H.H.C.S. CLUTCH ASSY. TO FRAME	2	.12	.09
9504	<u>BOLT</u> 1/4 x 28 x 1 1/2 H.H.C.S. CONTROL LEVER TO CLUTCH	1	.12	.09
	COLUMN SUPPORT TO FRAME	2		
9505	<u>BOLT</u> 1/4 x 28 x 2 1/4 H.H.C.S. CENTRE COUPLER TO FLOOR	2	.15	.12
9506	<u>BOLT</u> 1/4 x 28 x 2 1/2 H.H.C.S. BRAKE LEVERS TO CONTROL COLUMN	1	.15	.12
9507	<u>BOLT</u> 6 x 35 M.M. MUFFLER TO ENGINE	1	.10	.08
9508	<u>BOLT</u> 6 x 50 M.M. THROTTLE CABLE HOLDER TO ENGINE	1	.15	.12
	MUFFLER TO ENGINE	1		
9509	<u>BOLT</u> 8 x 20 M.M. MUFFLER TO ENGINE	2	.20	.15
9510	<u>BOLT</u> 8 x 45 M.M. ENGINE TO FRAME	4	.20	.15
9511	<u>SCREW</u> 10 x 32 x 5/8 R.H.M.S. FUELLINE CLAMP TO BODY	2	.08	.06
9512	<u>SCREW</u> 10 x 24 x 5/8 R.H.M.S. HEADLIGHT TO BODY	2	.08	.06
9513	<u>SCREW</u> 10 x 32 x 3/4 R.H.M.S. CLUTCH TUBE TO CONTROL LEVER	1	.08	.06
9514	<u>SCREW</u> 10 x 32 x 1 1/4 R.H.M.S. AIR CLEANER TO CARBURETOR	2	.10	.08

JIGER MODEL "152"

PART NO.	PART NAME	QTY PER JIGER	LIST PRICE	DEALER PRICE
9515	SCREW 10 X 3/8 P.H. SELF TAP CABLE LOCKPLATE TO HANDLE	2	.08	.06
9516	SCREW # 4 DRIVE SCREW SERIAL PLATE	2	.08	.06
9517	SCREW 6 X 32 X 1/4 SELF TAP. P.H. THROTTLE CABLE TO CARBURETOR	1	.08	.06
9518	WASHER 1/4" SPLIT LOCK THROTTLE CABLE STOP TO ENGINE	1	.05	.03
9519	WASHER # 110 EXTERNAL TOOTH LOCK AIR CLEANER TO CARBURETOR	2	.05	.03
9520	WASHER 5/16 SPLIT LOCK ENGINE TO FRAME MOTOR MOUNT TO FRAME	4 6	.08	.06
9521	WASHER 1/4" SOFT ALUM. AXLE TO BODY COUPLERS TO OUTSIDE BODY V.D. BRACKET TO OUTSIDE BODY CHAIN TENSIONERS TO OUTSIDE BODY SEAT TO OUTSIDE BODY MUFFLER DEFLECTOR TO OUTSIDE BODY TRAILER HITCH TO OUTSIDE BODY	24 6 6 12 8 2 2	.10	.08
9522	WASHER 1/4" STEEL FLAT SEAT TO INSIDE BODY FUELTANK TO SHELF BRAKE ACTUATOR TO STUD CONTR. COL. SUPPORT TO FRAME BRAKE LEVERS TO COLUMN MUFFLER DEFLECTOR TO OUTSIDE BODY	8 2 1 4 2 2	.08	.06
9523	NUT 6 X 32 ESNA BRAKE ROD ADJUSTMENT	4	.08	.06
9524	NUT 10 X 32 ESNA FUELLINE CLAMP TO BODY CLUTCH TUBE TO CONTROL LEVER	2 1	.08	.06

JLO PARTS PRICE LIST

MODEL 152 ENGINE

JLO NO.	PART NO.	PART NAME	QTY JIGER	LIST PRICE	DEALER PRICE
1	152-01-061-10	CRANK CASE HALF (MAG.SIDE.)	1	24.95	18.75
2	152-01-011-13	CRANK CASE HALF (OUTPUT S.)	1	16.95	12.72
8	B6-DIN -127	SPRING WASHER	21	.13	.10
11	M8X22-DIN-835-8G	CRANK CASE STUDS	4	.20	.15
12	M8X10-DIN-933-8G	DRAIN PLUG	1	.13	.10
13	A8X12-DIN-7603-F	DRAIN PLUG WASHER	1	.13	.10
14	152-01-719-00	CRANK CASE GASKET	1	.13	.10
15	M6X30-DIN-84-5S	CRANK CASE SCREW (SHORT)	4	.13	.10
16	M6X55-DIN-84-5S	CRANK CASE SCREW (LONG)	2	.15	.12
17	20 X32X7/8-DIN-6504	OIL SEAL, CRANKSHAFT	2	1.50	1.13
20	152-86-901-03	CRANK SHAFT ASS'Y	1	60.05	45.04
21	M12X1.5-DIN-936-5S	CRANK SHAFT NUT	1	.13	.10
22	B12-DIN-127	SPRING WASHER	1	.13	.10
23	6204-DIN-625-C3	BALL BEARING (OUTPUT SIDE)	1	4.10	3.08
24	6304-DIN-625-C3	BALL BEARING (MAG. SIDE)	1	5.10	3.83
25	152-03-649-00	ROLLER KEY	1	.50	.38
26	4X5JLO-N-151-27	CLUTCH KEY	1	.25	.19
27	102-03-659-00	CAM SPRING	1	.15	.12
28A	152-03-625-00	CRANK SHAFT SPACER	1	1.70	1.28
29	002-44-617-90	NEEDLE BEARING	1	3.00	2.25
30/33	152-05-901-00	PISTON, COMPLETE	1	19.40	14.55
30/33A	152-98-951-00	PISTON, .20" OVERSIZE	1	19.40	14.55
31	59X2.5-RWN-42121	PISTON RING SET	3	4.35	3.27
31A	59.5X2.5-RWN-42121	PISTON RING SET, .020"OVERS.	3	4.35	3.27
32	152-05-219-00	PISTON PIN	1	1.95	1.47
33	14X1-DIN-472	PISTON PIN RETAINER	2	.13	.10
40	152-07-802-10	CYLINDER	1	47.15	35.37
40A	152-07-802-10	CYLINDER .020" OVERSIZE	1	47.15	35.37
41	M8X40-DIN-939-8G	CYLINDER STUD	4	.20	.15
42	152-07-729-00	CYLINDER HEAD GASKET	1	1.15	.87
43	B8-DIN-127	SPRING WASHER	10	.13	.10
44	M8-DIN-934-5S	HEX. NUT	8	.13	.10
46	152-07-749-00	CARBURETOR GASKET	7	.25	.19
47	102-07-749-00	EXHAUST GASKET	1	.45	.34
48	152-07-719-00	CYLINDER GASKET	1	.15	.12
52	M6X35-DIN-933-8G	CARBURETOR STUD	2	.15	.12
49	152-07-129-00	CYLINDER HEAD	1	12.20	9.15
55	1-215-154-318	MAGNETO FLY WHEEL	1	25.00	18.75
56	1-217-031-965	MAGNETO BACK PLATE	1	27.50	20.63
55/56	102-11-809-01	MAGNETO DYNAMO, COMPLETE	1	63.85	47.89
61	360-11-131-00	RUBBER SLEEVE	1	.13	.10
62	002-44-401-90	GROMMET FOR IGNITION CABLE	1	.13	.10
63	M4X18-DIN-84-5S	BACK PLATE SCREW	2	.13	.10
64	B4-DIN-127	SPRING WASHER	2	.13	.10
65	1.7-DIN-125	WASHER	2	.13	.10
67	002-44-426-90	GROMMET, SHORT-OUT WIRE	1	.13	.10
67	002-44-435-90	GROMMET FOR LIGHT CABLE	1	.13	.10
68	152-01-001-00	STARTER MOTOR	1	1.10	.83
67	102-01-009-10	IGNITION TAP	1	4.55	3.42
67	102-01-001-00	STARTER MOTOR	1	.25	.19
				.13	.10

I/O PARTS PRICE LIST

MODEL 152 ENGINE

JLO NO	PART NO.	PART NAME	QTY JIGER	LIST PRICE	DEALER PRICE
70B	002-44-277-90	SPARKPLUG NUT	1	.15	.12
78	2-204-210-013	IGNITION COIL	1	17.35	13.02
79	1-214-210-042	LIGHTING COIL 12 W	1	5.70	4.28
80	2-677-330-100	CONDENSOR	1	1.40	1.05
81	1-217-013-003	IGNITION POINTS	1	2.95	2.22
83	1-213-037-021	LUBRICATING WICK	1	.50	.38
85	152-14-019-01	FAN COWL	1	10.15	7.62
86	M6X25-DIN-933-8G	HEX. SCREW FOR FAN COWL	4	.13	.10
87	M6X22-DIN-933-3G	HEX. SCREW , MAG. FLYWHEEL	3	.13	.10
88	M6-DIN-934-5S	HEX. NUT	3	.13	.10
89	A6.4-DIN-6798	LOCK WASHERS	3	.13	.10
90	152-14-071-11	ALUMINUM FLYWHEEL	1	17.55	13.17
171	N8X20-DIN-933-8G	BOLT MUFFLER TO CYLINDER	2	.30	.23
200	152.41X011-30	STARTER HOUSING	1	13.10	9.83
200A	152.41-843-00	RECOIL STARTER COMPLETE	1	35.60	26.70
201	102.41-121-11	ROPE DRUM	1	5.65	4.24
202	102.41-449-10	RECOIL SPRING	1	2.85	2.14
203	102.41-829-00	STARTER ROPE SINGLE	1	2.10	1.58
204	102.41-469-00	ROPE GUIDE BUSHING	1	.80	.60
205	252.41-007-00	STARTER HANDLE	1	2.80	2.10
206	252.41-016-00	RETAINING KEY	1	.30	.23
207	252.41-015-00	RETAINING RING	1	.55	.42
208	102.41-139-01	INTERM. PLATE	1	.40	.30
209	102.41-499-00	SPRING CAP INTERN.	2	.20	.15
210	102.41-509-00	BRAKE SPRING	2	.13	.10
211	102.41-519-00	SPRING CAP EXTERN.	2	.20	.15
212	102.41-219-01	STARTER PAWL	2	.95	.72
213	102.41-529-00	PAWL SPRING	2	.20	.15
214	102.41-149-00	COVER PLATE	1	.55	.42
215	M4X10-TYPE-2	KNIPPING NOTCHED BOLTS	4	.13	.10
216	102.41-539-00	CHECK PLATE	1	.40	.30
217	102.41-549-00	PLUG	1	.25	.20
218	M6X18-DIN-931-8G	HEX. SCREW	4	.13	.10
219	102.41-849-00	CARRIER	1	5.45	4.09
220	102.41-729-00	GASKET	1	.15	.12
221	102.41-719-00	DUST SEAL	1	.20	.15
280	152-15-801-10	GOVERNOR VANE	1	1.29	.97
281	M5X40-DIN-931-8G	BOLT FOR VANE	1	.13	.10
282	M5-DIN-934-5S	HEX. NUT	1	.13	.10
283	5B-DIN-127	SPRING WASHER	1	.13	.10
284	152.15-169-02	GOVERNOR ARM TO CARBURETOR	1	.25	.20
284E	284E	GOVERNOR ADJUST. ARM	1	.15	.12
284F	284F	ADJUST. ARM BUSHING	1	.13	.10
284H	284H	ADJUST. ARM HEX. NUT	1	.13	.10
284J	284J	ADJUST. ARM LOCK WASHER	1	.13	.10
284K	284K	GOVERNOR VANE SPRING	1	.95	.71

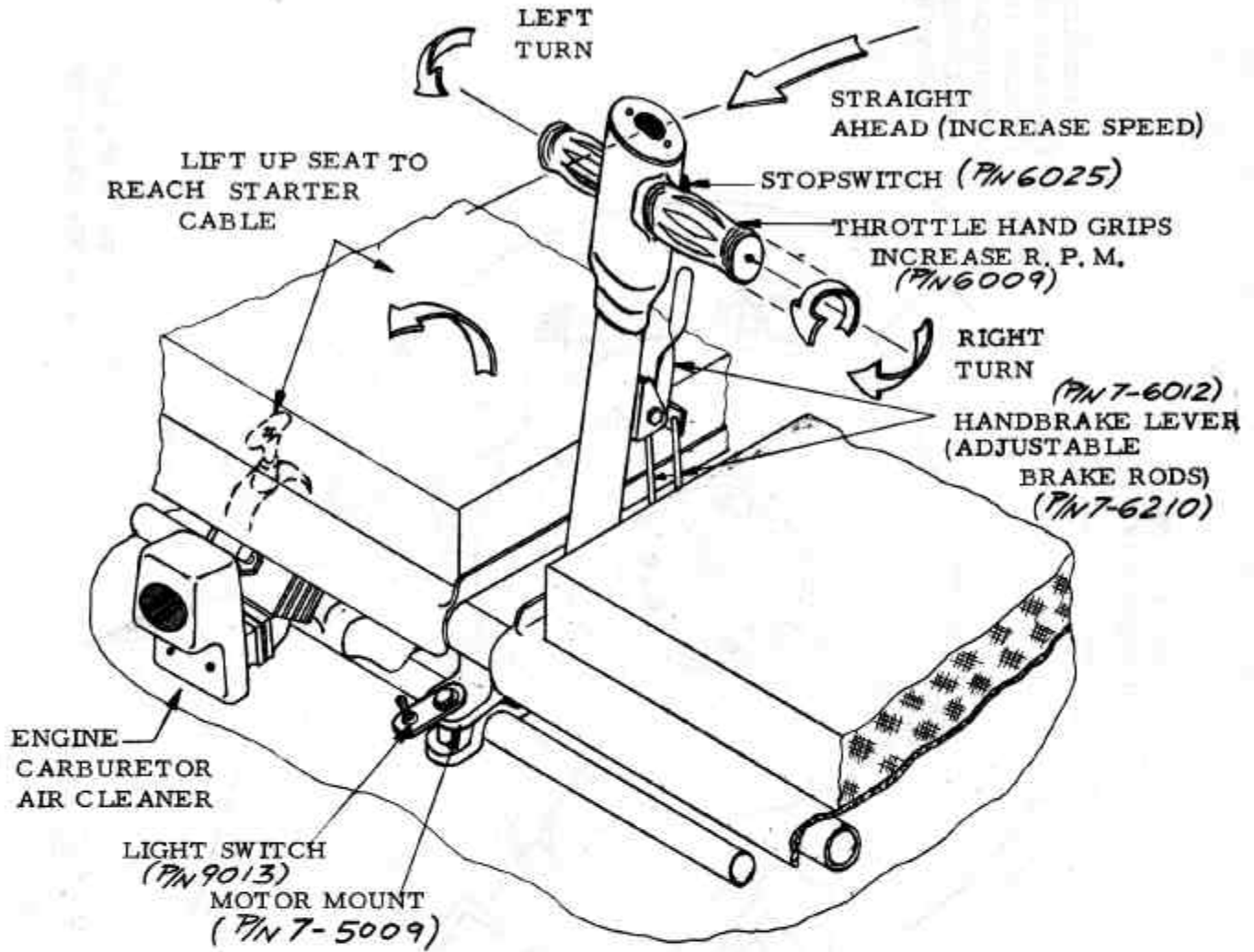
MODEL 152 ENGINE

TILLOTSON CARBURETOR PARTS

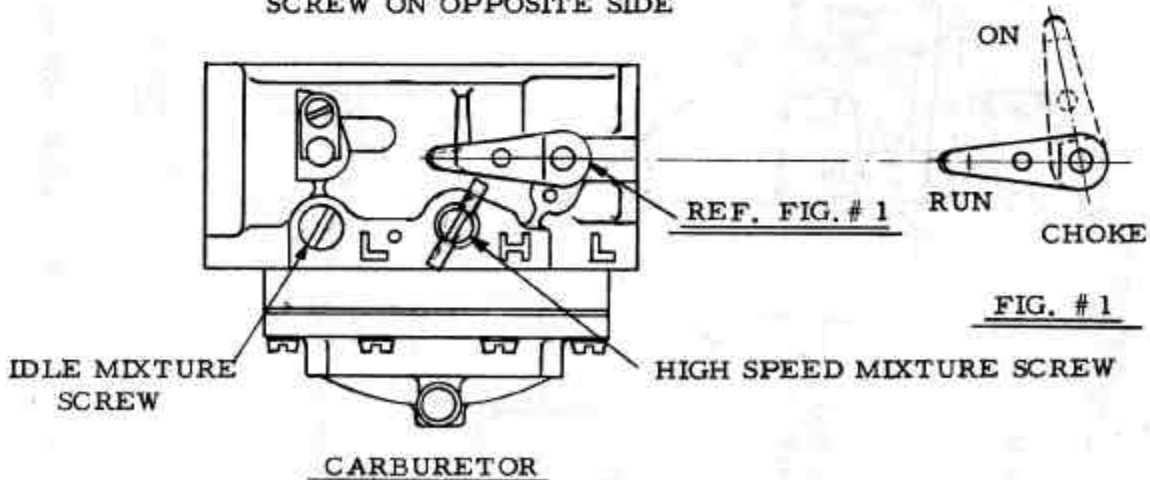
MODEL: EL-238A

REF. NO.	PART NO.	PART NAME	LIST PRICE	DEALER PRICE
1	014414	BODY (SERVICE)	14.58	10.93
2	02531	* BODY CHANNEL WELCH PLUG	.16	.12
3	04784	CHOKE FRICTION BALL	.16	.12
4	08805	CHOKE FRICTION SPRING	.16	.12
5	013597	CHOKE SHAFT	1.78	1.34
6	012547	CHOKE SHUTTER	.24	.18
7	08942	SCREW & LOCKWASHER FOR ABOVE	.16	.12
8	012473	DIAPHRAGM GASKET	.24	.18
9	012475	* DIAPHRAGM	2.19	1.64
10	012549	DIAPHRAGM COVER	2.17	1.63
11	013647	FLANGE GASKET	.16	.12
12	012930	FUEL PUMP GASKET	.24	.18
13	014230	* FUEL PUMP DIAPHRAGM (PULSE)	.73	.55
14	014229	* FUEL PUMP DIAPHRAGM (VALVE)	.97	.73
15	013335	FUEL PUMP BODY	1.94	1.46
16	010098	SCREW & LOCKWASHER FOR ABOVE	.16	.12
17	010530	* FUEL STRAINER SCREEN	.32	.24
18	010529	FUEL STRAINER COVER GASKET	.16	.12
19	010527	FUEL STRAINER COVER	.73	.55
20	010571	* FUEL STRAINER RET. SCREW	.24	.18
21	011498	* IDLE MIXTURE SCREW	.73	.55
22	08793	* IDLE MIXTURE SCREW SPRING	.16	.12
23	011428	IDLE MIXTURE SCREW WASHER	.16	.12
24	011401	IDLE MIXTURE SCREW PACKING	.16	.12
25	05095	* IDLE SPEED SCREW	.16	.12
26	0788	* IDLE SPEED SCREW SPRING	.16	.12
27	014020	* INLET CONTROL LEVER	.40	.30
28	013406	* INLET CONTROL LEVER FULCRUM PIN	.16	.12
29	013269	* RET. SCREW FOR ABOVE	.16	.12
30	014053	* INLET NEEDLE, SEAT & GASKET	2.11	1.58
31	010165	INLET SEAT GASKET	.16	.12
32	011503	* INLET TENSION SPRING	.24	.18
33	013266	* MAIN FUEL JET (.039)	1.38	1.04
34	06076	MAIN FUEL JET GASKET	.16	.12
35	0675	MAIN FUEL JET PLUG SCREW	.49	.37
36	013094	MAIN FUEL JET PLUG SCREW GASKET	.16	.12
37	012510	NOZZLE CHECK VALVE	2.43	1.83
38	013543	THROTTLE SHAFT & LEVER	1.46	1.10
39	09678	THROTTLE SHAFT CLIP	.24	.18
40	0992	THROTTLE SHAFT CLIP LOCKWASHER	.16	.12
41	01974	THROTTLE SHAFT CLIP RET. SCREW	.16	.12
42	012541	* THROTTLE SHAFT RETURN SPRING	.24	.18
43	012534	THROTTLE SHUTTER	.24	.18
44	08942	* SCREW & LOCKWASHER FOR ABOVE	.16	.12
45	GS-181	* GASKET & PACKING SET	.97	.73
46	RP-765	REPAIR PARTS KIT	9.80	7.35

* INDICATES CONTENTS OF REPAIR KIT.

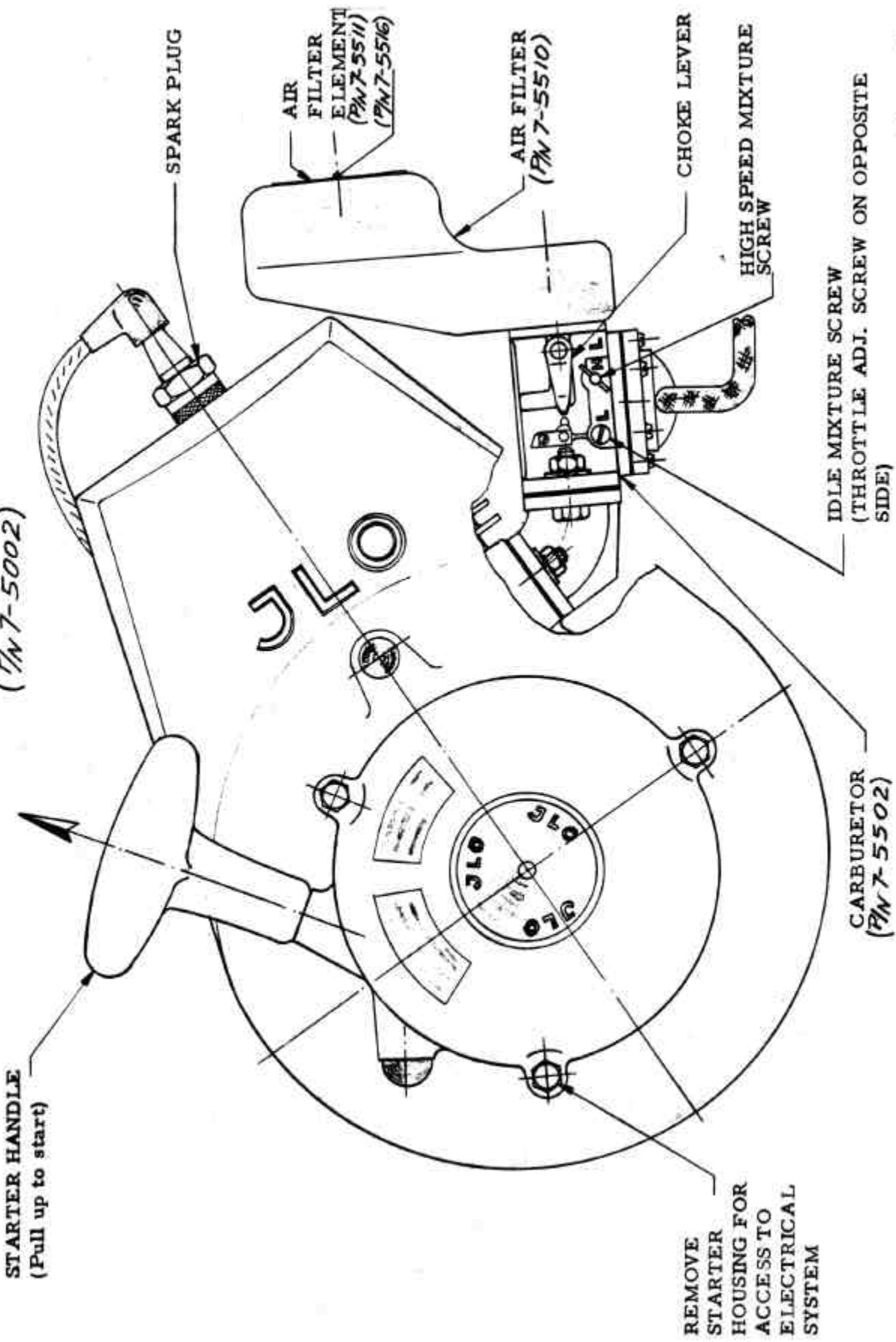


THROTTLE ADJ.
SCREW ON OPPOSITE SIDE

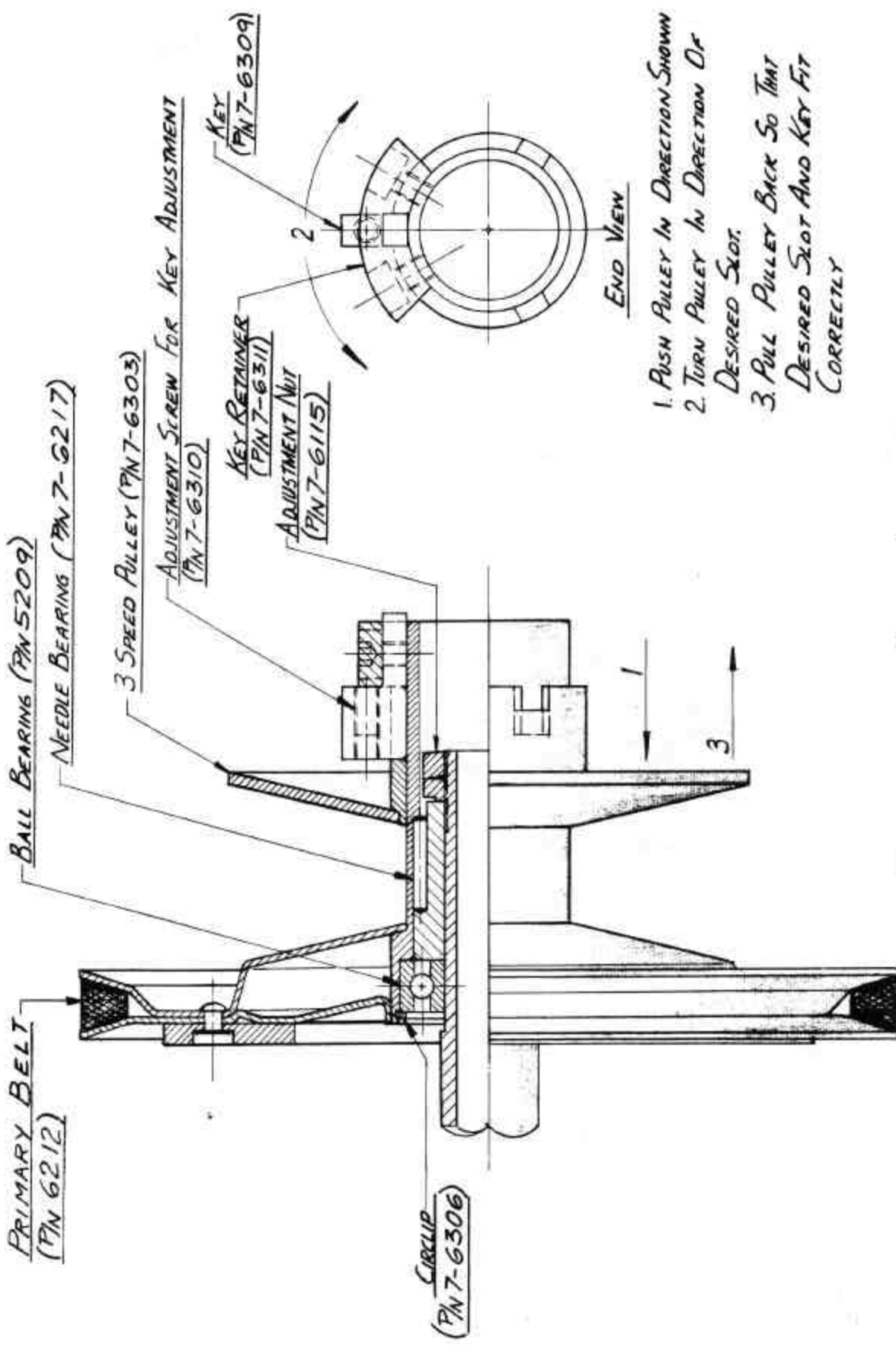


SKETCH # 1

ENGINE AND COMPONENT PARTS
(PN 7-5002)



SKETCH # 2

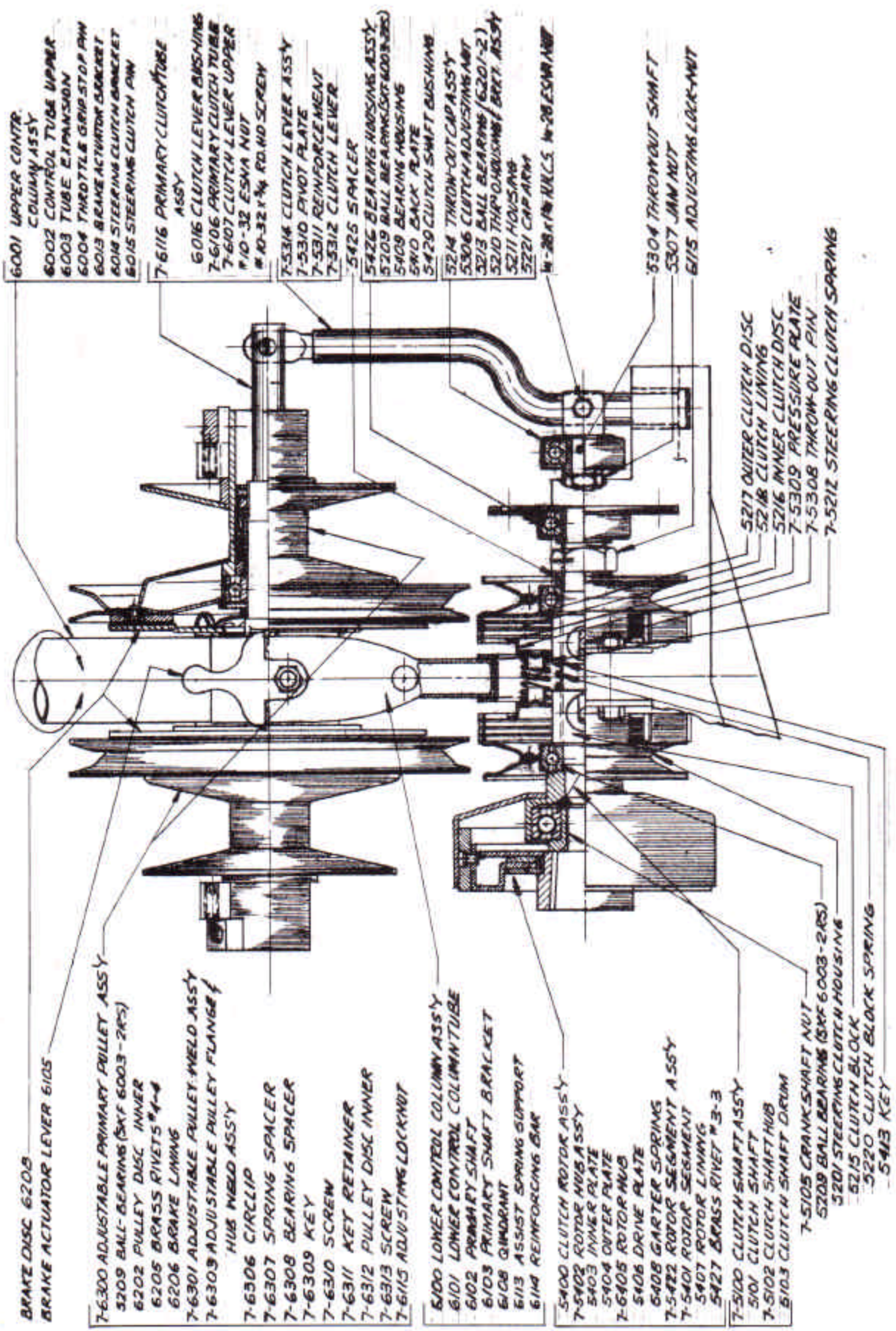


1. PUSH PULLEY IN DIRECTION SHOWN
2. TURN PULLEY IN DIRECTION OF DESIRED SLOT.
3. PULL PULLEY BACK SO THAT DESIRED SLOT AND KEY FIT CORRECTLY

COUNTERSHAFT PULLEY ASSEMBLY

SKETCH # 3

21st May '67 SL



Lay-Out Showing Portion
 Of Steering Column With
 Adjustable Primary Pulleys
 And Clutch Arrangement

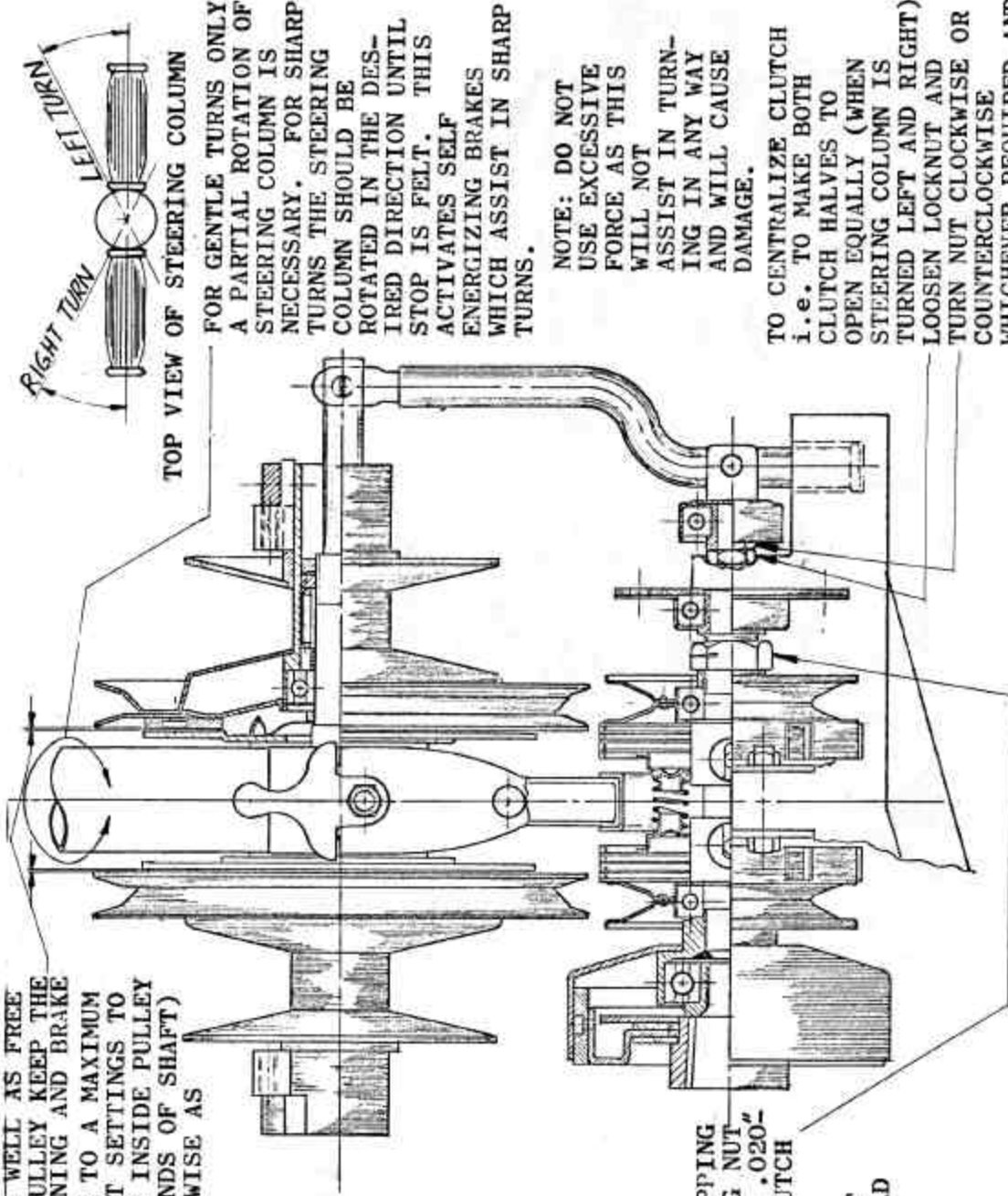
SKETCH #4

FOR PROPER BRAKE ACTION AS WELL AS FREE TURNING OF COUNTER SHAFT PULLEY KEEP THE CLEARANCE BETWEEN BRAKE LINING AND BRAKE PLATE FROM ALMOST TOUCHING TO A MAXIMUM OF 1/32" ALL AROUND. CORRECT SETTINGS TO BE OBTAINED BY TURNING NUT INSIDE PULLEY WITH NUT WRENCH (AT BOTH ENDS OF SHAFT) CLOCKWISE OR COUNTER CLOCKWISE AS REQUIRED.

NOTE: CONTROL COLUMN HAS TO BE REMOVED AND PRIMARY CLUTCH SHAFT TAKEN OUT BEFORE BRAKE ADJUSTMENT

TO ADJUST CLUTCH WHEN SLIPPING TURN SELFLOCKING ADJUSTING NUT CLOCKWISE UNTIL SHAFT HAS .020" .030" END PLAY TO ALLOW CLUTCH TO FUNCTION PROPERLY.

NOTE: WHEN ADJUSTING NUT HAS REACHED END OF THREAD ON SHAFT AND CLUTCH IS STILL SLIPPING CLUTCH LININGS (SIX P/N. 5218) HAVE TO BE REPLACED.



TOP VIEW OF STEERING COLUMN

FOR GENTLE TURNS ONLY A PARTIAL ROTATION OF STEERING COLUMN IS NECESSARY. FOR SHARP TURNS THE STEERING COLUMN SHOULD BE ROTATED IN THE DESIRED DIRECTION UNTIL STOP IS FELT. THIS ACTIVATES SELF ENERGIZING BRAKES WHICH ASSIST IN SHARP TURNS.

NOTE: DO NOT USE EXCESSIVE FORCE AS THIS WILL NOT ASSIST IN TURNING IN ANY WAY AND WILL CAUSE DAMAGE.

TO CENTRALIZE CLUTCH i.e. TO MAKE BOTH CLUTCH HALVES TO OPEN EQUALLY (WHEN STEERING COLUMN IS TURNED LEFT AND RIGHT) LOOSEN LOCKNUT AND TURN NUT CLOCKWISE OR COUNTERCLOCKWISE WHICHEVER REQUIRED AND AS MUCH AS NECESSARY. THEN TIGHTEN LOCKNUT SECURELY.

SKETCH #5

21st May '62 SC

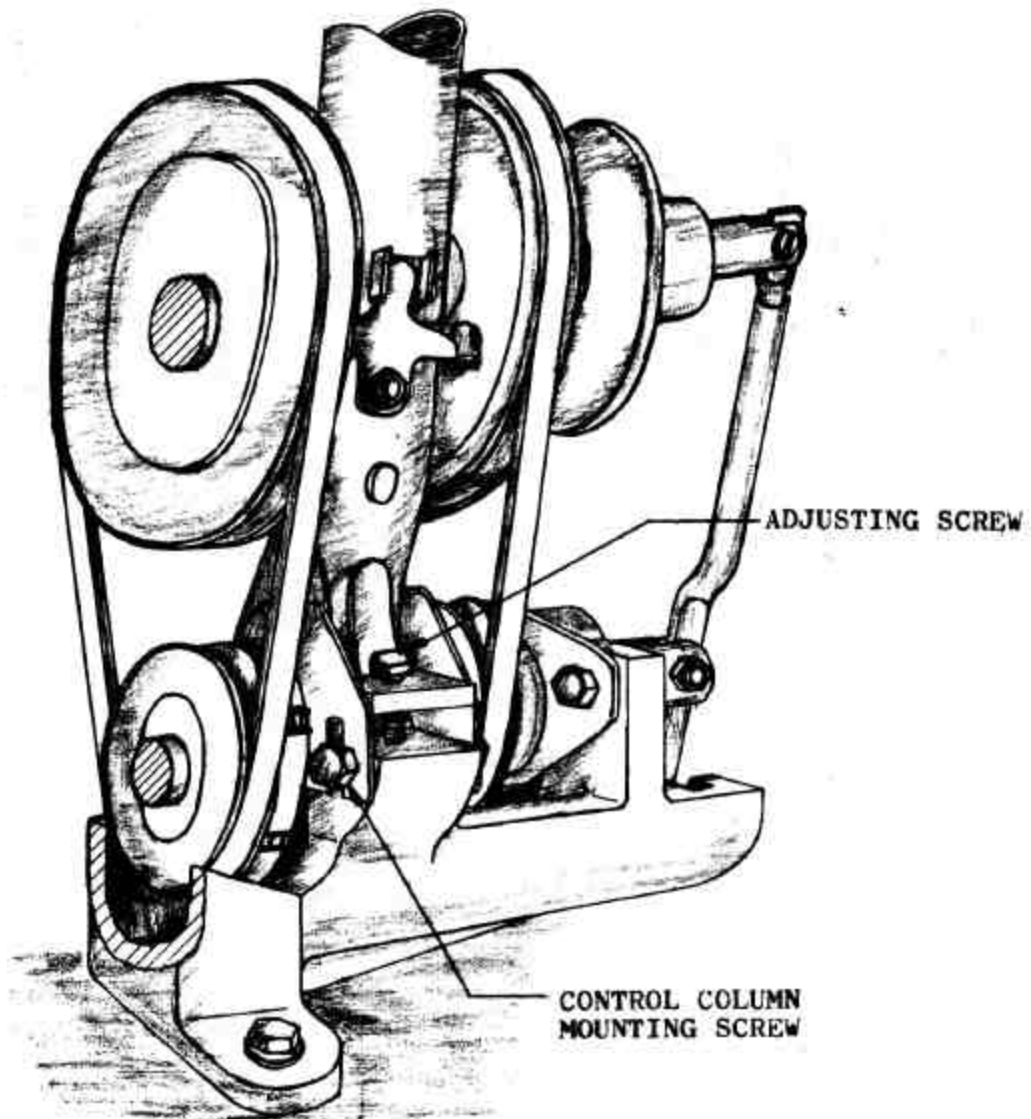
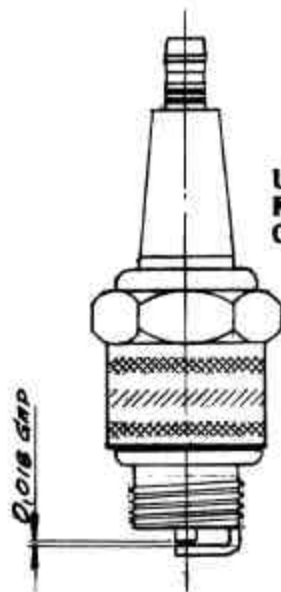
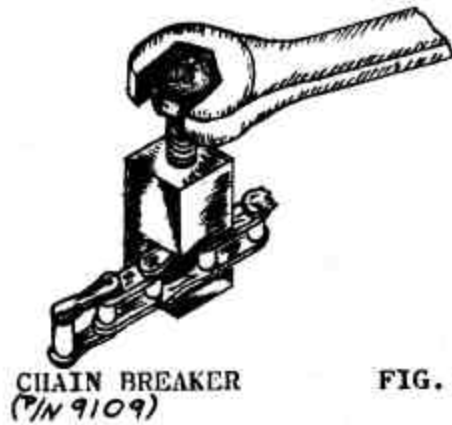


FIG. 5
PRIMARY BELT ADJUSTMENT



USE .018" FEELER GAUGE
FOR CORRECT ADJUSTMENT
OF SPARK PLUG GAP.

SPARK PLUG FIG. 7



CHAIN BREAKER
(P/N 9109)

FIG. 2

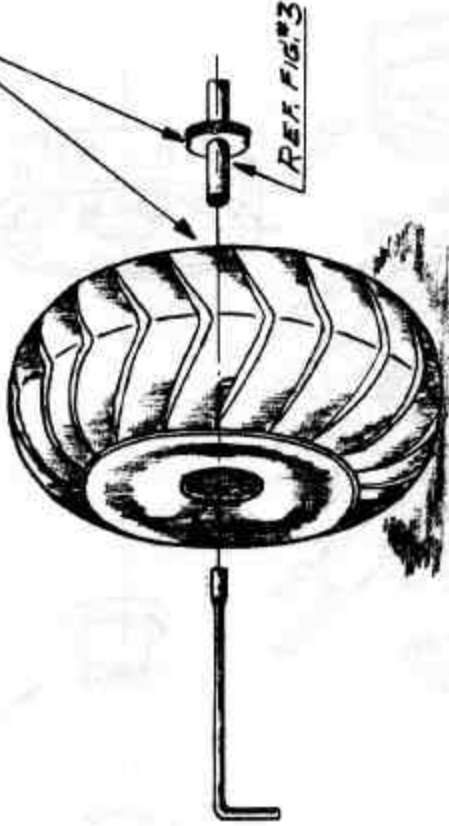
SKETCH #6



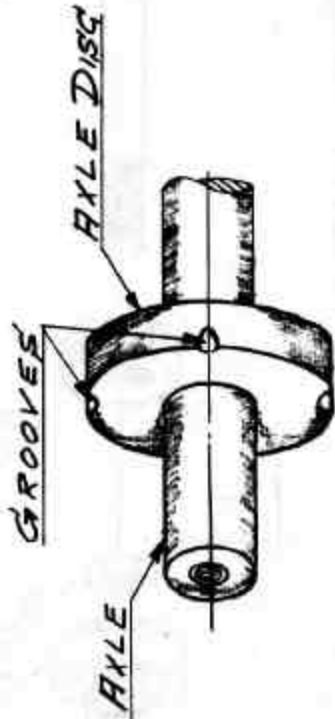
1 TIRE GAGE

TO CHECK FOR AVERAGE OPERATING PRESSURE IN TIRE, PUT WHEEL WRENCH ACROSS MOUNTED OUTER-RING OF TIRE AS SHOWN. WHEN INNER CORNER OF BOTH ENDS TOUCH INNER EDGE OF RING, AIR PRESSURE IS CORRECT.

NOTCHES IN TIRE AND GROOVES ON AXLE DISC MUST BE ENGAGED PROPERLY BEFORE TIGHTENING TIRE TO AXLE.

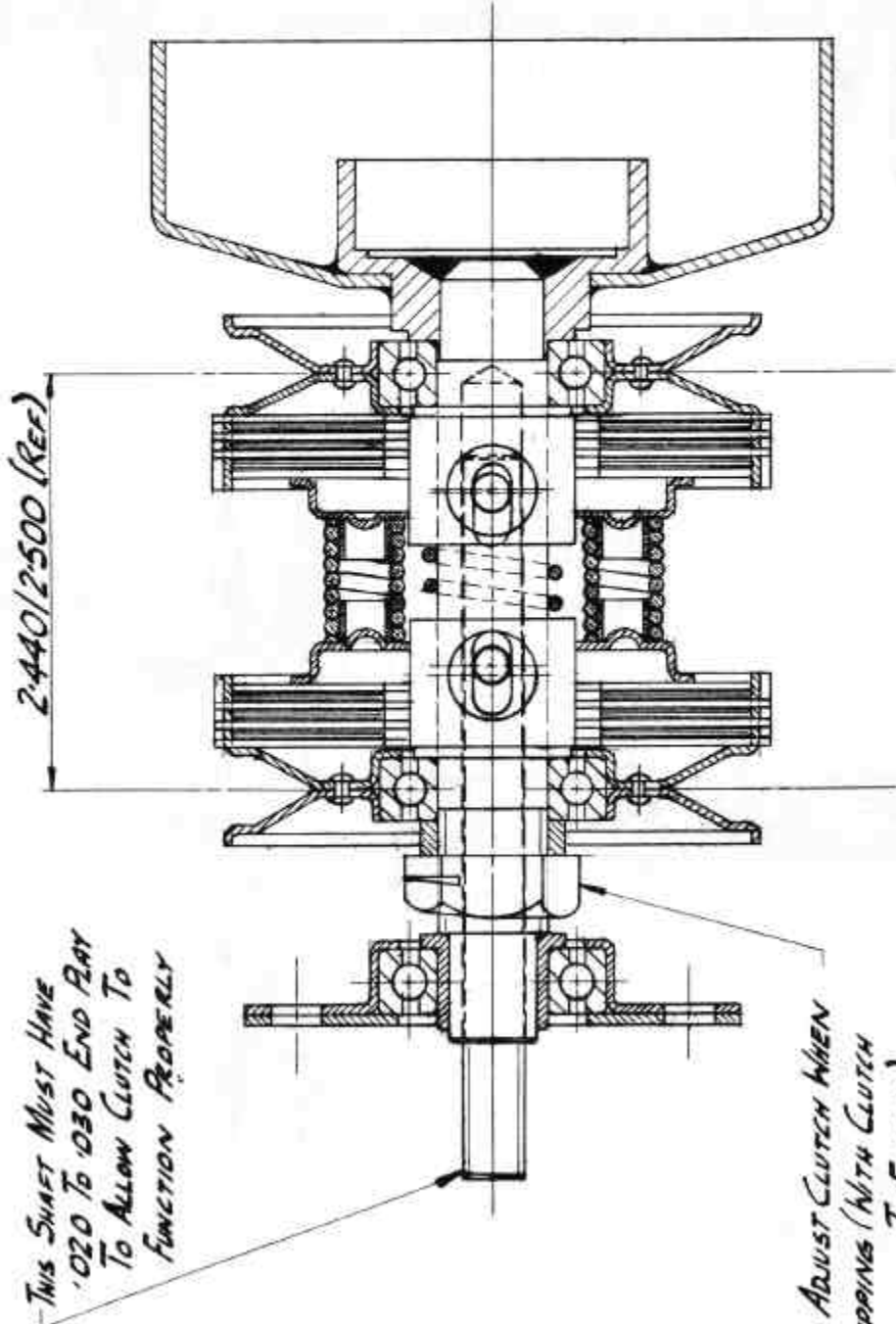


2 WHEEL WRENCH



3 AXLE DISC

APPLICATIONS OF WHEEL WRENCH (PART # 9123)



2.440/2.500 (REF.)

THIS SHAFT MUST HAVE
 .020 TO .030 END PLAY
 TO ALLOW CLUTCH TO
 FUNCTION PROPERLY

TO ADJUST CLUTCH WHEN
 SLIPPING (WITH CLUTCH
 MOUNTED TO ENGINE)
 TURN NUT COUNTERCLOCKWISE
 UNTIL SHAFT HAS THE
 AMOUNT OF END PLAY
 AS DESCRIBED ABOVE

SECTIONAL VIEW OF
 '97 CLUTCH ASSEMBLY P/N 7-5600

SKETCH #9

NOTE: FOR CLUTCH COMPONENT
 NUMBERS SEE SKETCH #8

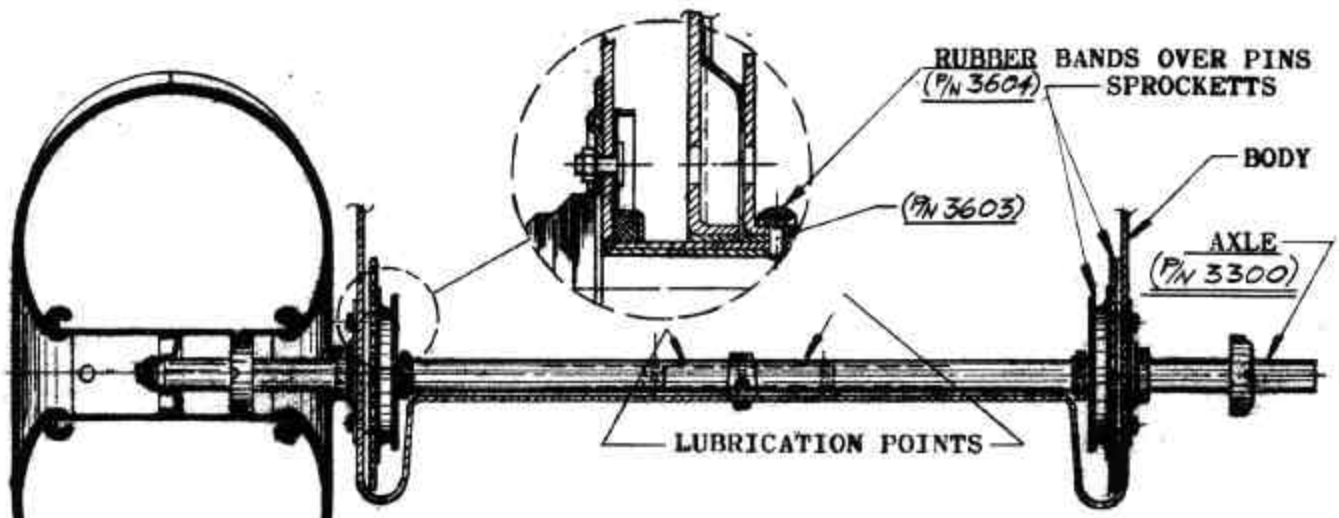


FIG. 4 A.

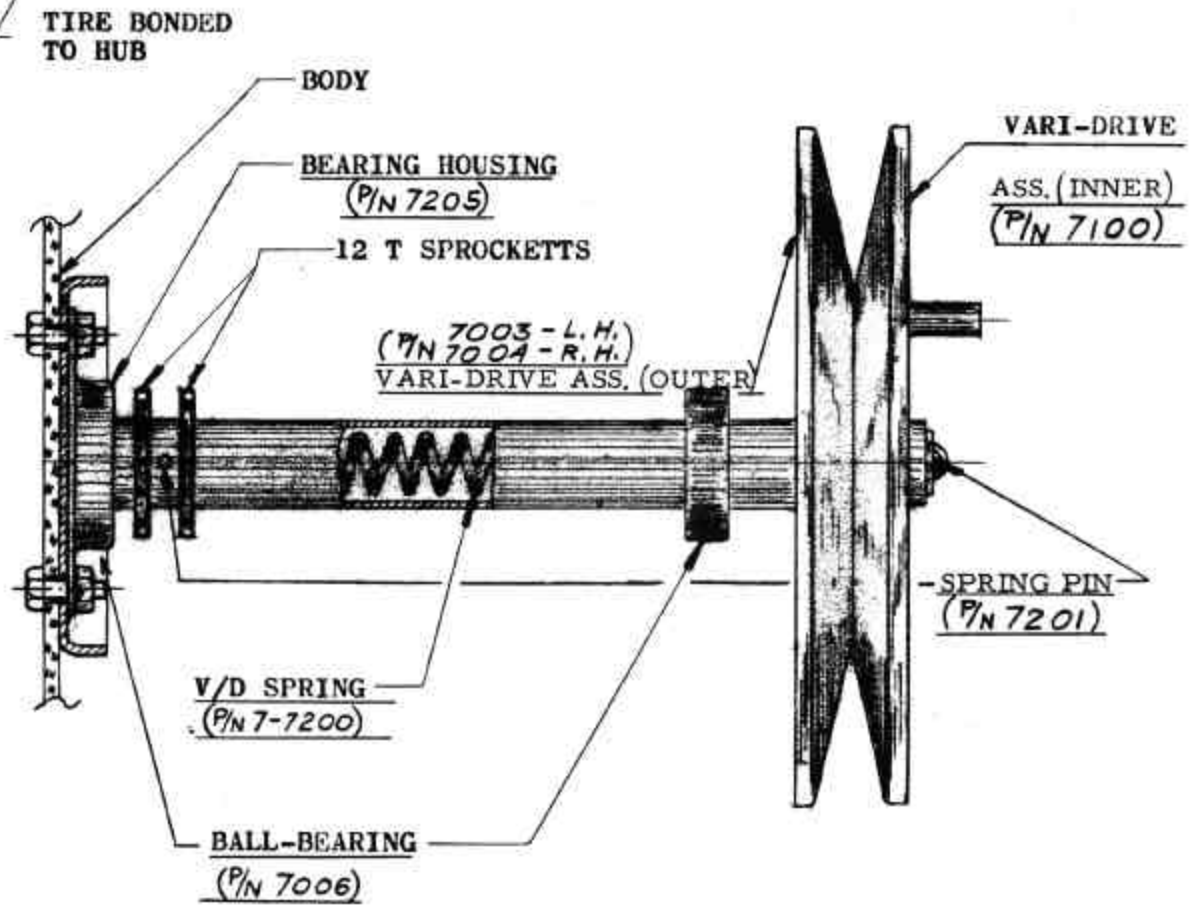


FIG. 4 B.

SKETCH #10

INSTRUCTIONS FOR INSTALLING VARIDRIVE BELTS
AND ASSIST SPRING ROD

1. Remove back shelf and lift seats.
2. Place left hand belt in left rear "V" pulley (behind seats), and into small left front drive pulley (under seats).
3. Force control stick forward to within 1/2 inch of front seat support cross tube. Belt will now be deeply engaged in rear "V" pulley.
4. Pull back on control stick and hold. Repeat procedure with right hand belt.
5. With control stick in forward position, ease end of rod "A" through bracket "B". Place curved end of rod on saddle "C".
6. Pull back on control column till assist spring service pin comes through bracket and drops free. Save pin for future use, service and maintenance, etc.
7. Release control column gently forward.
8. Replace back shelf and seats.

